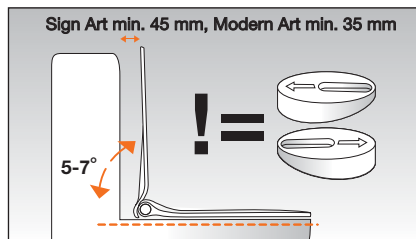
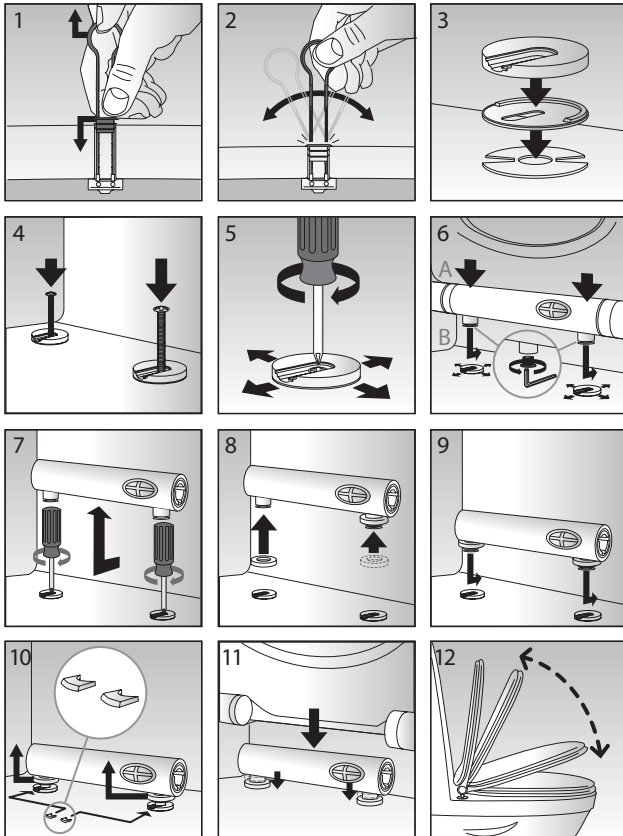


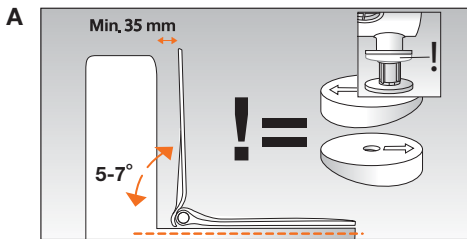
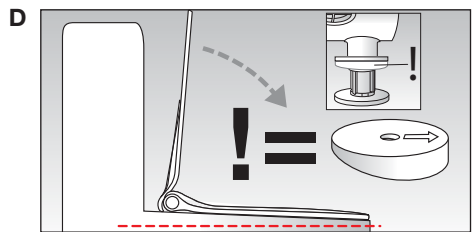
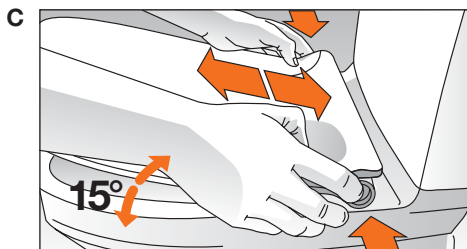
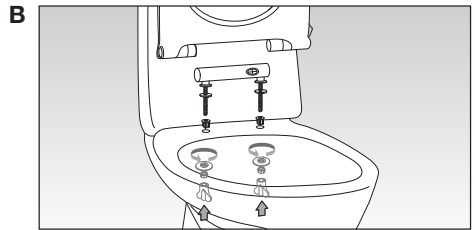
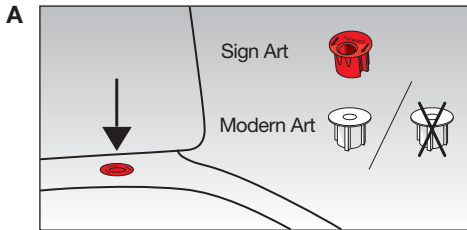
QUICK GUIDE: Top mounted

(DK) S.10, (S) S.26, (GB) P.41, (D) P.55, (F) P.69, (NL) P.83



QUICK GUIDE: Bottom mounted

(DK) S.8-9, (S) S.24-25, (GB) P.40-41, (D) P.54-55, (F) P.68-69, (NL) P.82-83



ONLY Sign Art

